

# Enabling Device Monitoring, Classroom Management and More



**After struggling to make another EdTech monitoring and management solution work, Dewey Public Schools (OK) has finally found a solution that's a perfect fit.**

Christopher Russell has been with Dewey for 19 years and served as the Technology Director since 2011. He knows what his teachers need, and what they don't. Prior to finding NetRef, Dewey was using a different device management system that didn't work the way they needed it to. Students would get set up using their Chromebooks in one classroom but were then locked out of sites in their next class. Each time a student changed classes, that teacher had to reset the student's device, taking valuable time away from teaching. There had to be a better way.

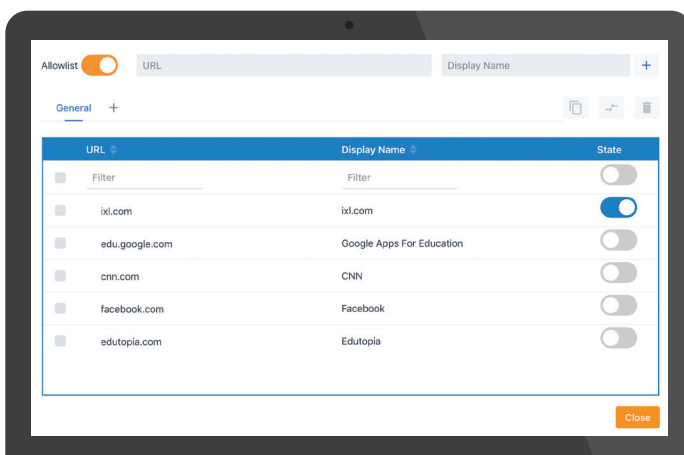
“

*NetRef supplied the quality interface... and the ability for there to be a schedule... That was a massive factor for us.*

”

## Finally, Dewey Finds a Better Way with NetRef

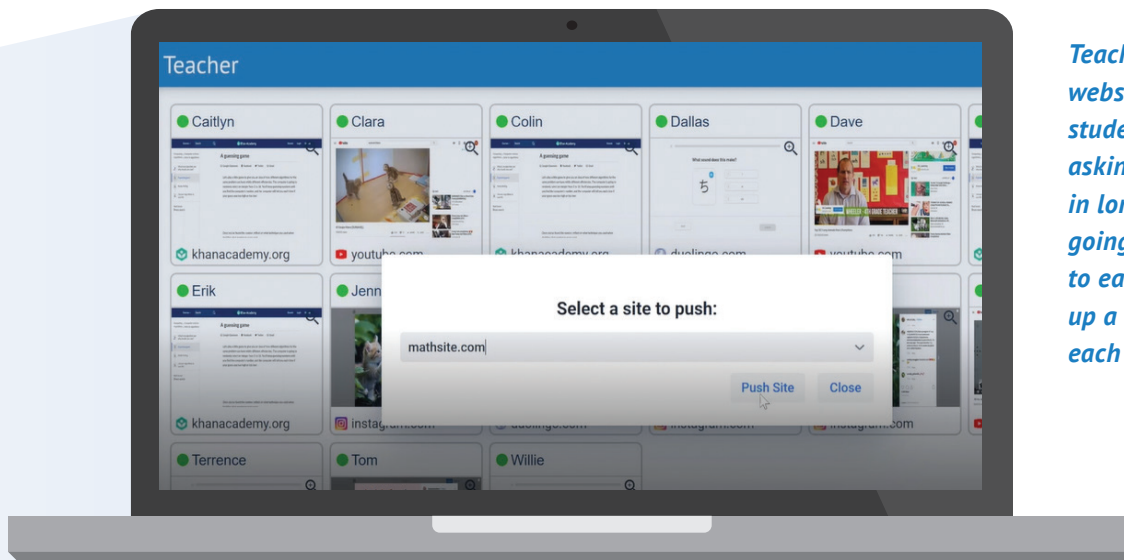
After evaluating seven EdTech monitoring and management programs—and conducting five in-depth interviews—Russell saw a NetRef demo at a conference. He liked that each teacher can set different access permissions and that those permissions automatically change on student devices based on the bell schedule. Finally, he'd found the solution he'd been looking for. Russell also knew that NetRef would give teachers autonomy: the ability to run their classrooms the way that works for them, not the way a software program makes them. Now that Dewey has been using NetRef for over a year, one of the most common uses is guiding and restricting which websites students visit by enabling an Allowlist.



*Teachers can limit and guide students' site access by enabling an Allowlist.*

## Simplify, Manage, Succeed

While Dewey uses NetRef most in its middle school, they're continually finding new ways to use the program at other grade levels. Dewey has a 1:1 tech initiative for 5th-12th grade that was expanded in the 2020-21 school year to include pre-K. Now that younger students have Chromebooks, teachers needed additional support in device management. Pre-K teachers appreciate being able to use NetRef to push websites out to students, saving them from having to walk around to each student's desk to pull up a site.



*Teachers can push websites out to students instead of asking them to type in long URLs or going around to each desk to pull up a website on each device.*

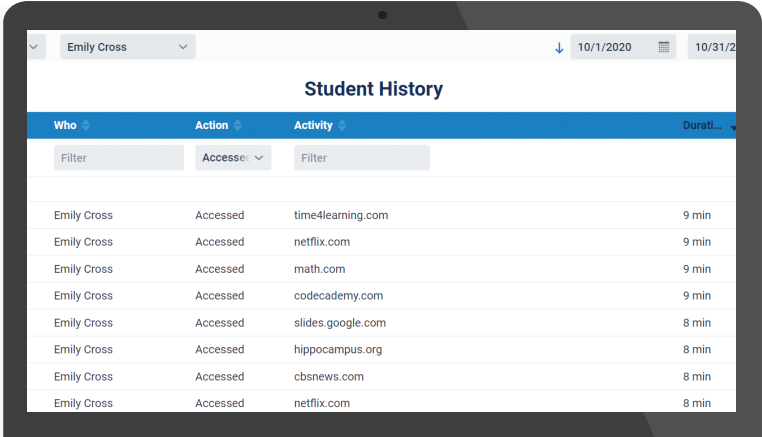
“

*We were able to give [teachers] something that could simplify not just their classroom monitoring but really help them manage their classrooms. This was a big checkbox for them.*

”

## Supporting Students During and After Class

Monitoring how students use the internet during class and redirecting as needed is a common use of NetRef. But if teachers don't have time to check on a student during class, or a student was home for a day, NetRef's reports are a helpful reference. If a teacher noticed a student seemed distracted, they can run an engagement report to see how long the student spent on educational sites, and then have a follow-up conversation if needed. "The ability to go back in and see here's what a student was doing during this time has been very beneficial," says Russell.



| Who         | Action   | Activity          | Duration |
|-------------|----------|-------------------|----------|
| Emily Cross | Accessed | time4learning.com | 9 min    |
| Emily Cross | Accessed | netflix.com       | 9 min    |
| Emily Cross | Accessed | math.com          | 9 min    |
| Emily Cross | Accessed | codecademy.com    | 9 min    |
| Emily Cross | Accessed | slides.google.com | 8 min    |
| Emily Cross | Accessed | hippocampus.org   | 8 min    |
| Emily Cross | Accessed | cbsnews.com       | 8 min    |
| Emily Cross | Accessed | netflix.com       | 8 min    |

*Teachers can run an engagement report to see the amount of time students spent on educational sites.*

## Meeting District Needs, This Year and Next

NetRef's facilitation of classroom monitoring and management has made all the difference for Dewey teachers. Russell attributes teachers' easy adoption of the program to NetRef's integration with their student information system. "The ability for NetRef to populate based on students' class schedules was big for us." This spring, as budget decisions are made, Russell looks forward to analyzing NetRef's ROI reports to answer questions around EdTech usage such as: "Was it something that we thought we'd use and didn't? Maybe it's not something that we get this year? We didn't think we'd use it as much, and then did? Maybe we need to expand it?" He expects NetRef will answer these questions, just as they've met the district's other needs.

“

*The first (EdTech monitoring and management program) we used for a year and then dumped them. NetRef we used for a year and then added 50% to our licensing model. Maybe that speaks for itself.*

”

**NETREF**

Part of  Linewize